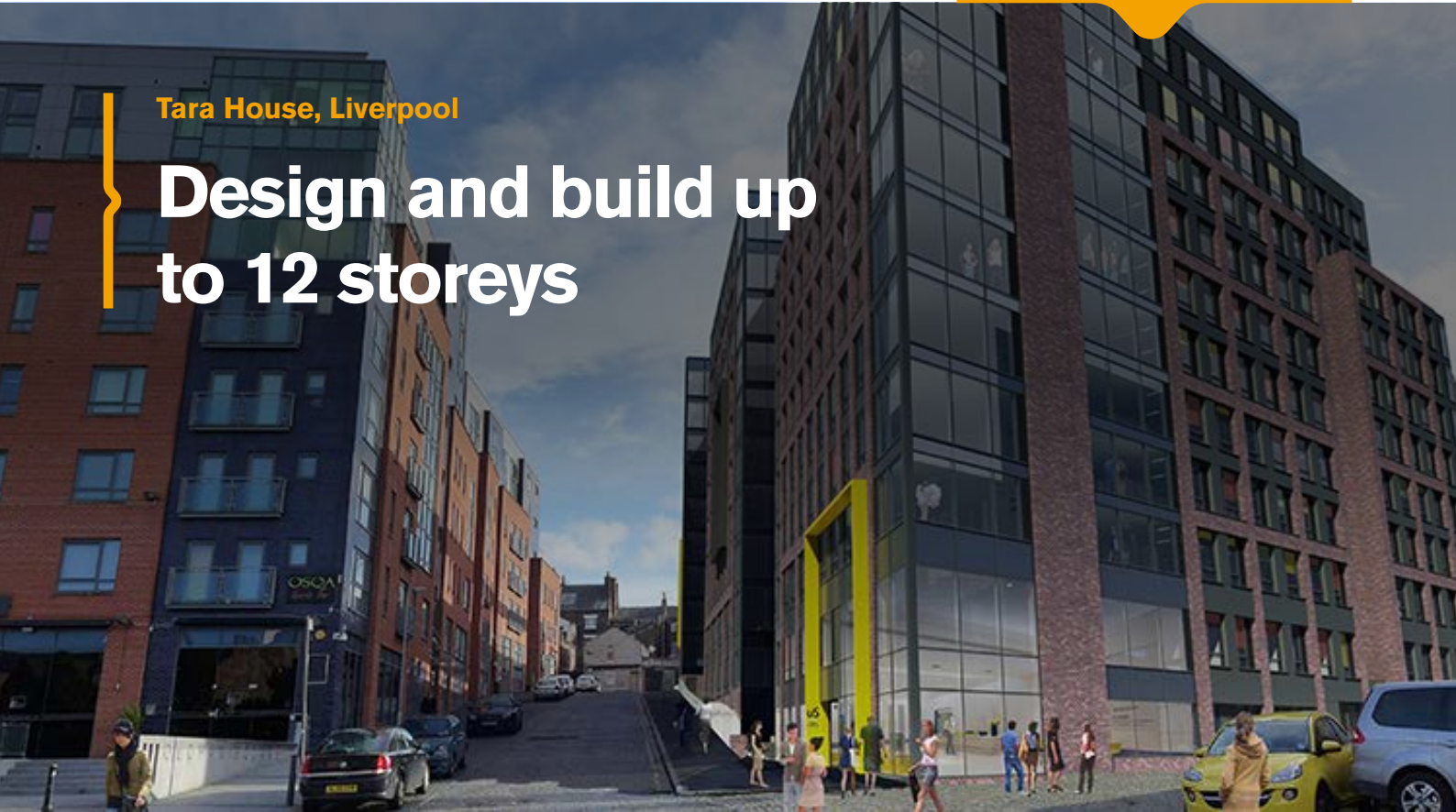


Tara House, Liverpool

Design and build up to 12 storeys



Tara House: Project summary

Client Unite Students Location Liverpool	Project Consultants Tower 8	Civil Engineers Mayo Civils	Sector Student accommodation	Architects Rio Architects	Project Value £35 million
£35 million investment	769 Bedrooms	12 storeys (up to)	3,700 ft ² retail space		

Addressing the high demand for student accommodation and as acting as a “catalyst to the urban renewal in this part of Liverpool” (Unite Students), Tara House is a substantial student accommodation scheme bringing back to use the land of a disused car park in order to create four, high quality student cluster blocks, sleeping 769.



The huge complex which includes 3,700 sq ft of ancillary retail, directly facing the old St Luke's church.

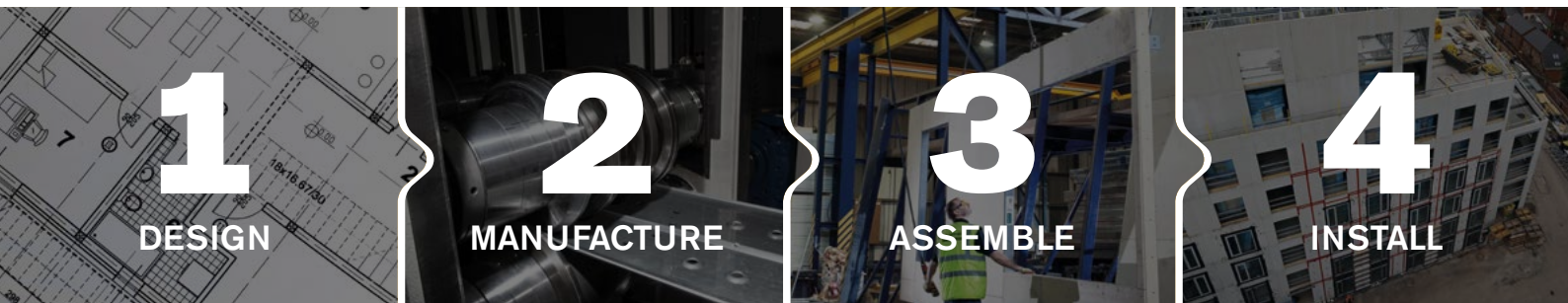
Sigmat has been commissioned to design, manufacture, assemble and install the superstructure frame on top of a concrete transfer deck.



“Sigmat light gauge steel framing is fast to erect, bringing particularly advantageous return on investment benefits to large scale projects such as this. We are able to eliminate risks from the whole process as a single supplier, effectively co-ordinate the logistics to site and use our own on site teams for installation. This helps ensure a faster weathered envelope and rapid access for follow on trades.”

Roger French
Sigmat

Sigmat 4 step solution



Sectors



RESIDENTIAL



STUDENT
ACCOMMODATION



HOTEL



RETIREMENT
LIVING / CARE



EDUCATION



MIXED USE

Find out how Sigmat can help you and your business

Call: 01756 701 522

Email: info@sigmat.com

Birkbecks, Water Street, Skipton, North Yorkshire BD23 1PB

