



Perry Barr Residential Scheme

Providing the structural frame for 430 apartments across 2 plots for private sale and rent on the former Birmingham University City Campus.

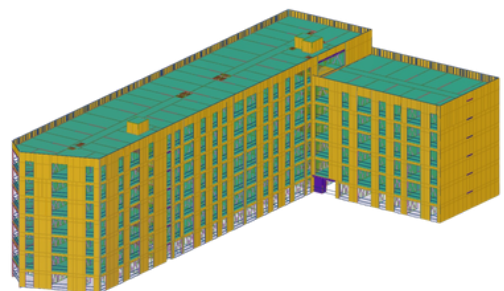
The impressive scheme saw the development of one and two-bedroom apartments across four and six storeys. Designed by Corstorphine & Wright, the vision of the residential development is to create new activity and vibrancy for the area whilst providing much-needed housing provision.

The role of offsite

The Sigmat team were appointed by Willmott Dixon to provide the lightweight steel frames for both plots 8 and 9. With a projected 32-week programme of which completed on time, the Sigmat team demonstrated the benefits of constructing using offsite methods. Working collaboratively, the follow-on trades were able to commence at an earlier date with 700+ bathroom pods installed at a rate of 15-20 pods a day.



When you talk about the scale of a project, there are not many like this in the UK - it is industry leading. Offsite manufacturing provides programme certainty and significantly increased efficiency for customers – we're probably around 30% more efficient than a traditional build project. The positive impact offsite manufacturing has on our carbon footprint is also a huge benefit, changing from traditional building techniques to offsite will all add up to huge differences in ten years or so. For our customers, offsite means improved programme certainty and assured quality through repetition and standardisation.





At a Glance



430 apartments



100no stairs
flights & landings



15.4km Sigmat
panels



Completed on
time



3,791m³
concrete
installed



Plots 8 and 9



700+ pods
installed



32,386m² decking
installed



Early engagement and close collaboration with the full project design team ensured that the compatibility for all other trades worked. Handing over the buildings floor by floor also gave the follow-on trades an early as possible start on site, highlighting the programme benefits of LGSF and the Sigmat system.

John Ritchie, Operations Manager,
Sigmat

